



- Do not record speeds of passing vehicles.
- Record trucks or other commercial vehicle speeds separately.
- Count at least 75 vehicles in each direction.
- Spend no longer than 3 hours on a spot speed check even if less than 75 vehicles per direction are counted in that time.
  - Observation time on low volume roads (less than 500 Average Daily Traffic) may be limited to one hour providing less than 8 total vehicles are counted in one hour.
- Tally pedestrians and bicycles traveling along the roadside
  - Count separately for each direction.
  - Separate counts by estimated general age of cyclist:
    - Child (up to 12 years)
    - Youth (from 13-20 years)
    - Adult (21 years and older)
- Do not include pedestrian or bicycle cross-traffic.

It is important to note that the manual directs staff to perform these checks on weekdays during off-peak hours. This provides results that best represent average conditions. Taking spot speed checks at other periods when it is perceived that traveling speeds on the highway are higher does not provide justification for lowering the posted speed. Higher highway speeds result in a higher 85<sup>th</sup> percentile speed. Under the guidelines and practices for determining speed zones, a higher 85<sup>th</sup> percentile speed would indicate that a higher, not lower, speed zone would be warranted in that location.

Two spot speed checks were taken on US26 near Rhododendron. One spot speed check was taken at approximate milepoint 42.9, just east of East Faubion Loop. The 85<sup>th</sup> percentile speeds were 57 mph for westbound vehicles and 54 mph for eastbound vehicles, with an average 85<sup>th</sup> percentile speed of 56 mph. The second spot speed check was taken at milepoint 44.15, east of East Littlebrook Lane. The 85<sup>th</sup> percentile speeds were 49 and 51 mph for westbound and eastbound vehicles, respectively, with an average 85<sup>th</sup> percentile speed of 50 mph.

Information with the dates, locations, and results of the spot speed checks are attached below.

Oregon Department of Transportation

Roadway: Mt. Hood Hwy.  
#26, US26

Date: September 27, 2006

City:

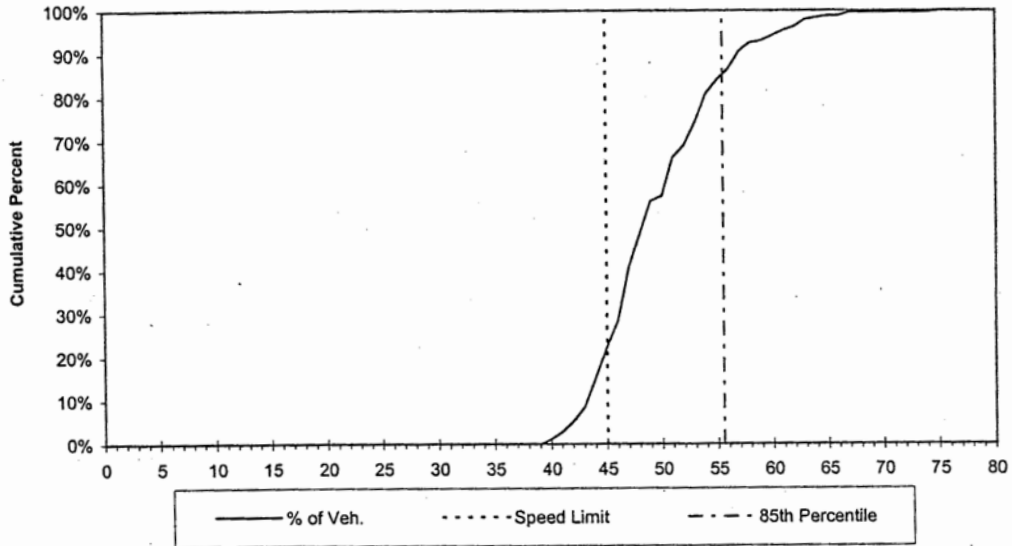
Time: 1315 - 1355

County: Clackamas

Location: 250' E of E Faubion Loop  
MP 42.90 (?)

Weather: clr calm 75F

Direction of Travel: WB & EB



	MPH	Averaged	MPH
	WB		EB
# of Vehicles	123	246	123
85th % Speed	57	56	54

Oregon Department of Transportation

Roadway: Mt. Hood Hwy.  
#26, US26

Date: September 26, 2006

City:

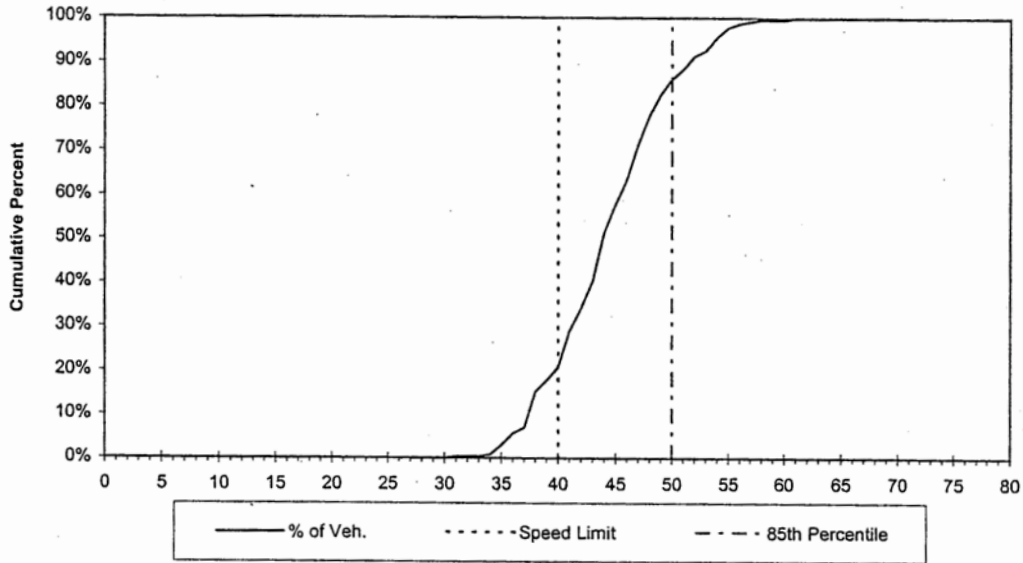
Time: 1230 - 1320

County: Clackamas

Location: 350' E of E Littlebrook Ln  
MP 44.15

Weather: clr calm 75F

Direction of Travel: WB & EB



	MPH	Averaged	MPH
# of Vehicles	WB 114	231	EB 117
85th % Speed	49	50	51