



US 26 (Mt. Hood Highway) Rhododendron to M.P. 49.2

PROJECT LOCATION

US 26 (Mt. Hood Highway) from milepost 44.2 (near E. Henry Creek Road) to milepost 49.2 (just east of Twin Bridges Road).

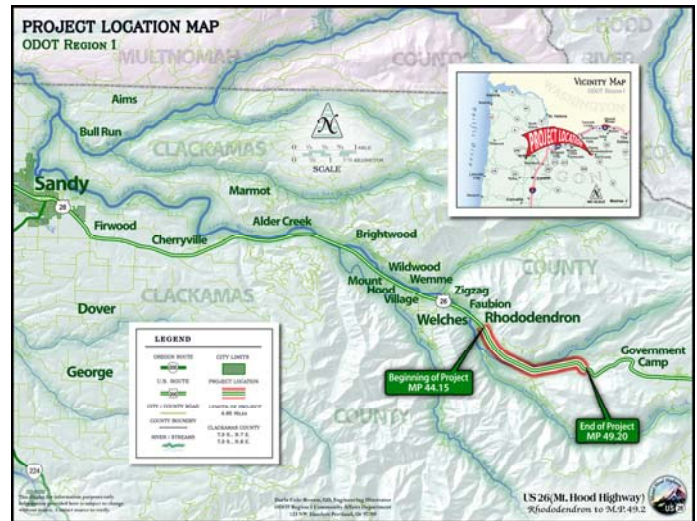
PROJECT STATUS

The project is currently in the design phase.

PROJECT SUMMARY

A safety and preservation project that includes:

- Re-paving and re-striping the highway from milepost 44.2 to 49.2.
- Creating a slow-moving vehicle turnout and winter chain removal area between milepost 47.7 and 48.9 in the westbound direction.



PURPOSE AND NEED

Areas of pavement along this section of US 26 are fatigued and in need of rehabilitation; rutting and potholes also exist in certain areas. In addition, there is no dedicated area for a slow-moving vehicle turnout or winter chain removal area, which presents safety concerns.

PROJECT TIMELINE

Once design is finalized, ODOT anticipates opening bids in March 2011 to select a contractor for the project. Construction is estimated to begin by June 2011 and is estimated to be completed by September 2011.

PROJECT COST

Estimated \$4.5 million.

PROJECT IMPACTS

During construction, ODOT expects that there will be intermittent single lane closures with flaggers controlling traffic, and that both daytime and nighttime work will take place. Updates will be communicated as we near construction.

For safety reasons, ODOT may remove a number of *selected* trees (not a clear-cut) as part of the project. ODOT may only remove trees that are a hazard due to their proximity to the road.

PROJECT WEB SITE: www.oregon.gov/ODOT/HWY/REGION1/US26_Rhododendron

CONTACT INFORMATION: For more information or questions about this project, please contact:

Elizabeth Craig
Community Affairs Coordinator
(503) 731-8237
elizabeth.craig@odot.state.or.us

Kyle Crate
Project Leader
(503) 731-8496
kyle.w.crate@odot.state.or.us

